

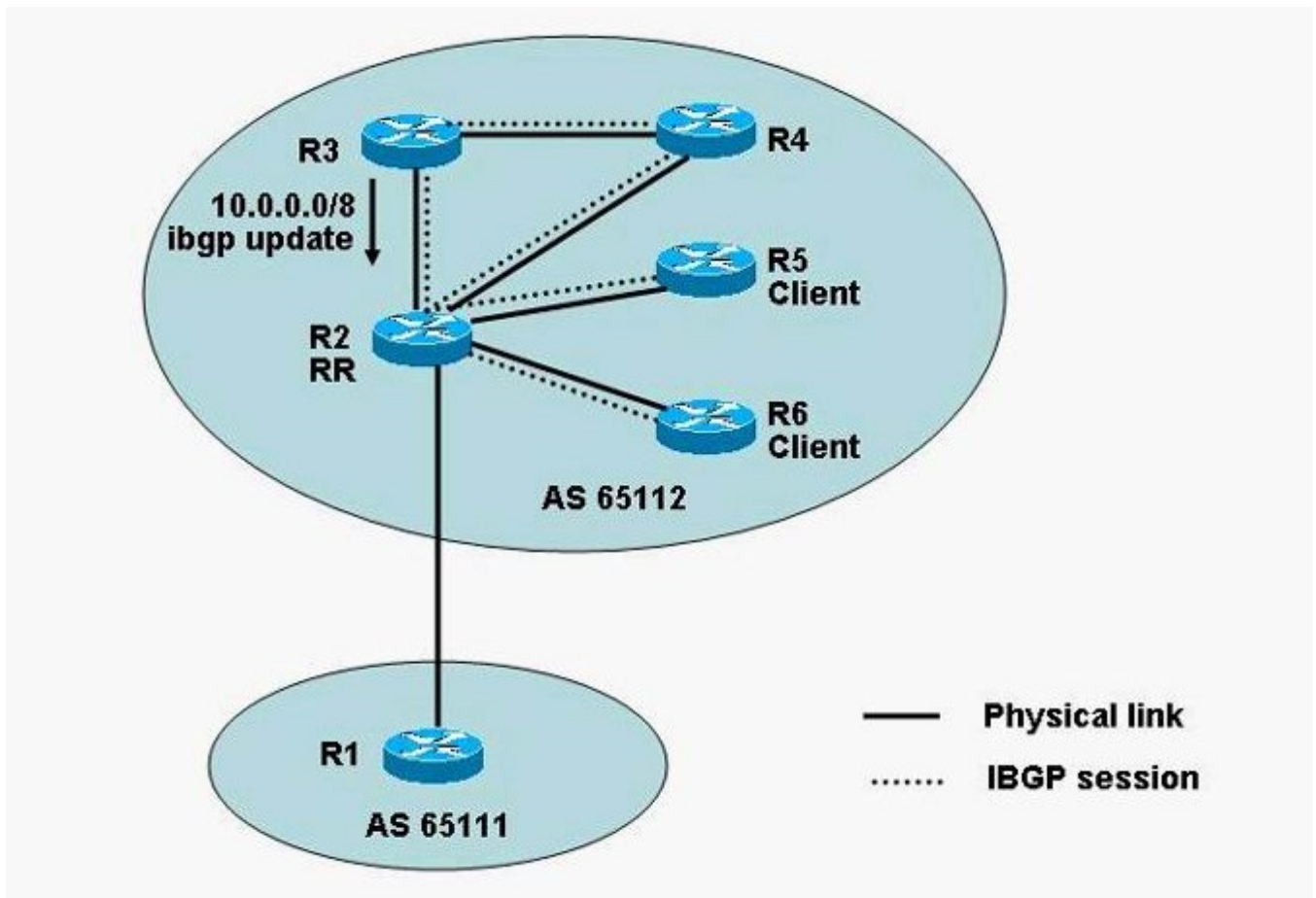


Exam : 642-691

**Title : CCIP BGP + MPLS Exam
(BGP + MPLS)**

Version : Demo

1. Based on the network diagram shown in the exhibit, both R5 and R6 are clients of the R2 RR. When the 10.0.0.0/8 iBGP update from R3 is received by the R2 RR, which router(s) will R2 reflect the update to?



- A. R1 only
- B. R5 and R6
- C. R5, R6 and R1
- D. R4, R5 and R6
- E. R4, R5, R6 and R1
- F. to no other router

Correct: C

2. Based on this configuration, which two peering router neighbor statements are correct? (Choose two.)
 router bgp 50001 neighbor 192.168.1.1 remote-as 50001 neighbor 10.1.1.1 remote-as 50002 neighbor 10.1.1.1 local-as 50003 ! output omitted

- A. EBGP - neighbor 10.1.1.2 remote-as 50003
- B. EBGP - neighbor 10.1.1.2 remote-as 50001
- C. EBGP - neighbor 10.1.1.2 remote-as 50001 and neighbor 10.1.1.2 local-as 50003
- D. IBGP - neighbor 192.168.1.2 remote-as 50001
- E. IBGP - neighbor 192.168.1.2 remote-as 50003
- F. IBGP - neighbor 192.168.1.2 remote-as 50003 and neighbor 192.168.1.2 local-as 50001

Correct: C D

3.LAB

After the network administrator modified the configuration on the WGR1 router, the WGR1 router is not able to receive any prefixes from AS22. The network administrator original intent was to only filter out a particular prefix from AS22.

Fix the configuration on the WGR1 router to solve the problem. You have correctly solved the problem once the WGR1 router is able to receive 23 prefixes from AS22.

Enable secret password is **cisco**

The screenshot shows the eSIM Professional interface for Scenario 1, Version 1.0. On the left, a text box provides instructions: "You will have to scroll this window, and the one above, to view all of the instructions to perform the task. Configure the router using the terminal emulation screen that opens when you click on the host computer. Use the **Show Topology** button to leave the terminal emulation." Below the instructions is a "Hide Topology" button. On the right, a network diagram shows a blue router labeled "WGR1" connected to a "Console" terminal. The router is part of "AS1 SUB-AS 65001" and has a "Loopback 197.1.1.1". Two interfaces are shown: "S0/1.3 192.168.1.17/30" with "DLCI 104" connected to "To AS20", and "S0/1.2 192.168.1.13/30" with "DLCI 103" connected to "To AS22".

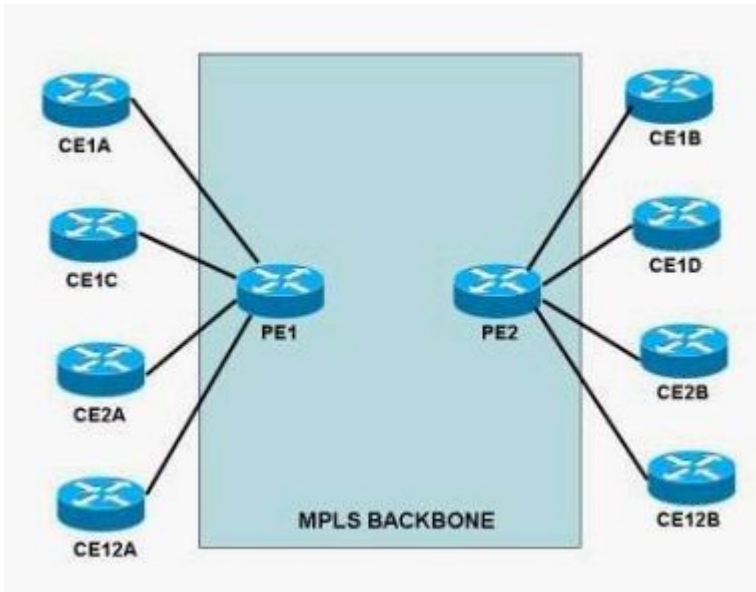
Correct:

4. Which two statements about a transit AS are correct? (Choose two.)

- A. A transit AS has eBGP connection(s) to only one external AS.
- B. Routes between ASs are always exchanged via eBGP.
- C. A transit AS uses an IGP like OSPF or ISIS to propagate the external networks within the transit AS.
- D. Core routers within a transit AS normally use default routing to reach the external networks.
- E. iBGP sessions can be established between non directly connected routers.

Correct: B E

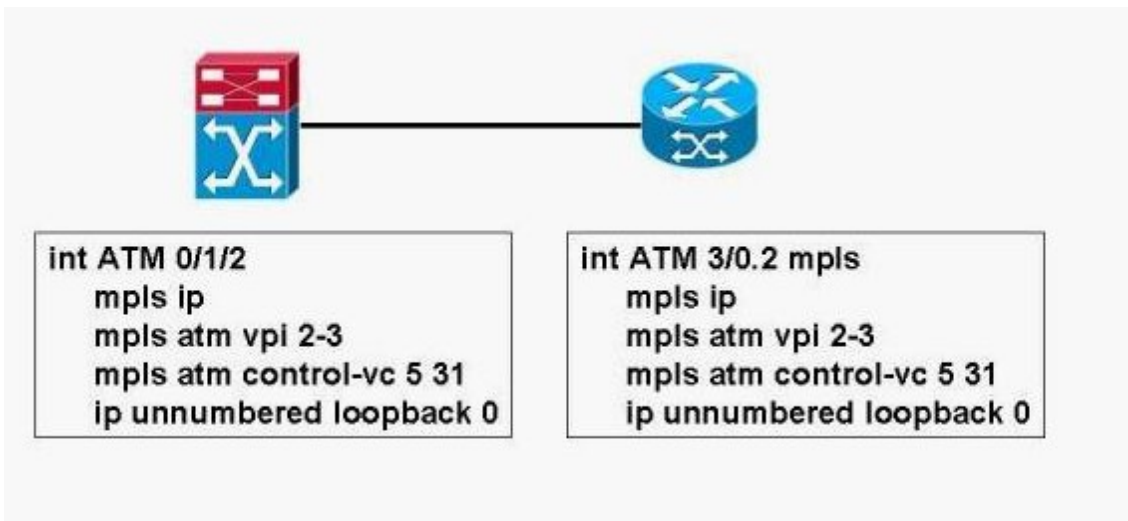
5. Refer to the exhibit and the following connectivity requirements. How many different VRFs are required? Sites CE1A, CE1B, CE1C, and CE1D require connectivity among them. Sites CE2A and CE2B require connectivity between them. Site CE12A requires connectivity to sites CE1A, CE1B, CE1C, CE1D, and CE12B. Site CE12B requires connectivity to sites CE2A, CE2B, and CE12A.



- A.2 VRFs
- B.3 VRFs
- C.4 VRFs
- D.6 VRFs
- E.8 VRFs
- F.10 VRFs

Correct:C

6.Refer to the exhibit. A diagram of a router connected to an MPLS-enabled ATM switch via an LC-ATM MPLS interface, and a partial configuration for the MPLS-enabled ATM switch and router are shown. Which statement describes what is incorrect about the configuration shown?



- A.CEF has not been enabled on the router.
- B.The VPI range of 2-3 is invalid.
- C.The control VPI/VCI has not been set to 0/32 on the router.
- D.VC-merge has not been enabled on the ATM switch interface.
- E.The router has not been configured to specifically use LDP.

Correct:A

7. When using MPLS unicast IP forwarding, what will happen if an LSR receives an incoming labeled packet but the LSR can't find that incoming label in its LFIB?

- A. The packet will be forwarded using the FIB.
- B. The packet will be forwarded using the LIB.
- C. The packet will be process switched by performing a route lookup in the routing table.
- D. The packet will be forwarded using the LFIB with an imp-null outgoing label.
- E. The packet will be dropped even if the IP destination exists in the FIB.

Correct: E

8. Refer to the exhibit. Based on the show outputs, which condition could be preventing the P1 router from establishing TDP adjacency with its neighbor over the s0/0.211 and s0/0.212 subinterfaces?

```
P1#sh mpls ldp neighbor

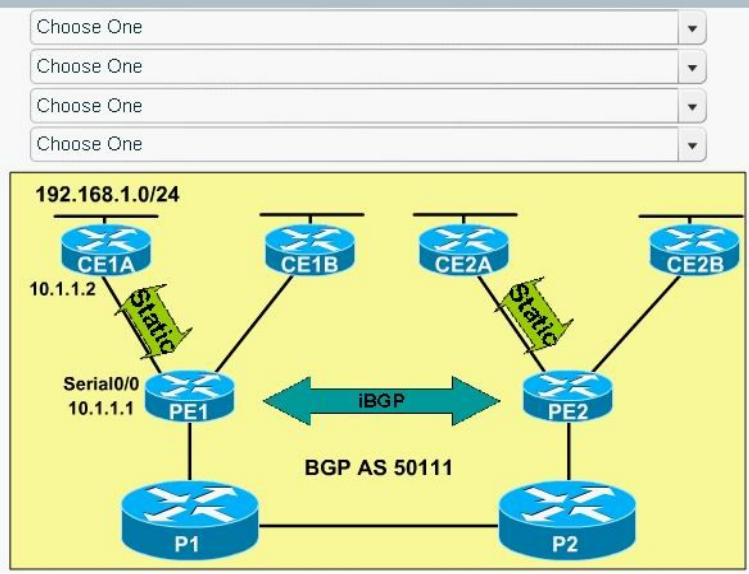
P1#sh mpls interfaces
Interface          IP          Tunnel  Operational
Serial0/0.211     Yes (tdp)  No      Yes
Serial0/0.212     Yes (tdp)  No      Yes
```

- A. The s0/0.211 and s0/0.212 subinterfaces line protocol are in the down state.
- B. The P1 router cannot establish a TCP session with its neighbors.
- C. The P1 router is missing the mpls label protocol LDP command.
- D. The show mpls tdp neighbor command needs to be used to view the TDP neighbor status.

Correct: B

9. LAB

CE1A and CE2A belong to the Customer_A VPN. Select the correct commands for the PE1 router to establish static routing from PE1 to the CE1A 192.168.1.0/24 network by selecting them from the dropdown menus below. Some of the commands must be entered in the correct order. Also enable propagation of the static route into MP-IBGP. Assume the MP-IBGP session between PE1 and PE2 have been configured already.



Correct:

10.What is the correct command to set the BGP scanner interval to two minutes?

A.bgp scan-time 2

B.bgp scan-time 120

C.bgp scan-time 2 60

D.The maximum scanning interval cannot exceed one minute.

Correct:D